



Nominal pressure: PN 10 / 16
Face to face acc. to EN558-1 R 1
Flanges acc. to DIN EN 1092-2
Body: ductile cast iron (0.7043)

Lining: PFA
Ball: PFA-lined
Full Bore

Blow-out Proof Stem in Stainless Steel (PFA lined)

Anti-Static Design

Operation: Hand Lever,
optional with gear box and handwheel

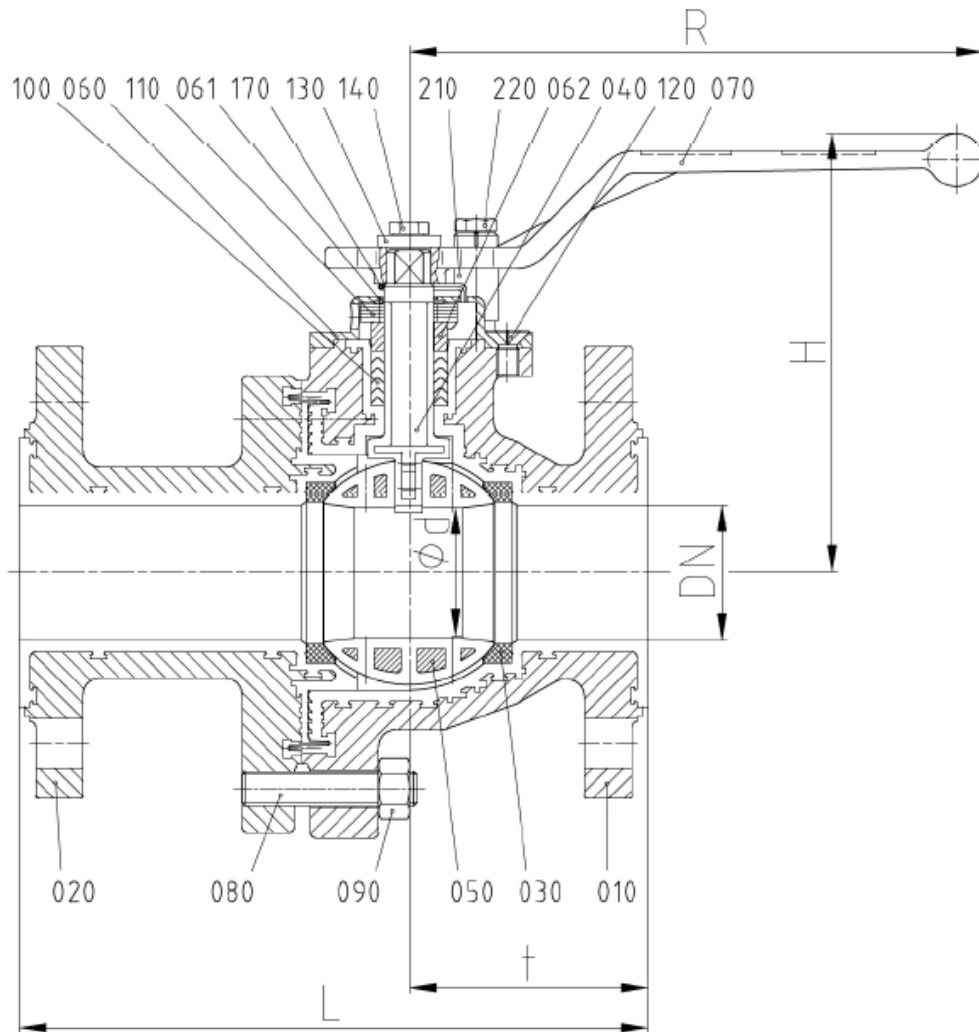
Optional:
PFA-conductive
V-control ball
Ceramic ball

Tests/Approvals: TA-Luft acc. to VDI 2440

Nominal Pressure (mm)	Article number
15	KHA-2.2-015
20	KHA-2.2-020
25	KHA-2.2-025
32	KHA-2.2-032
40	KHA-2.2-040
50	KHA-2.2-050
65	KHA-2.2-065
80	KHA-2.2-080
100	KHA-2.2-100

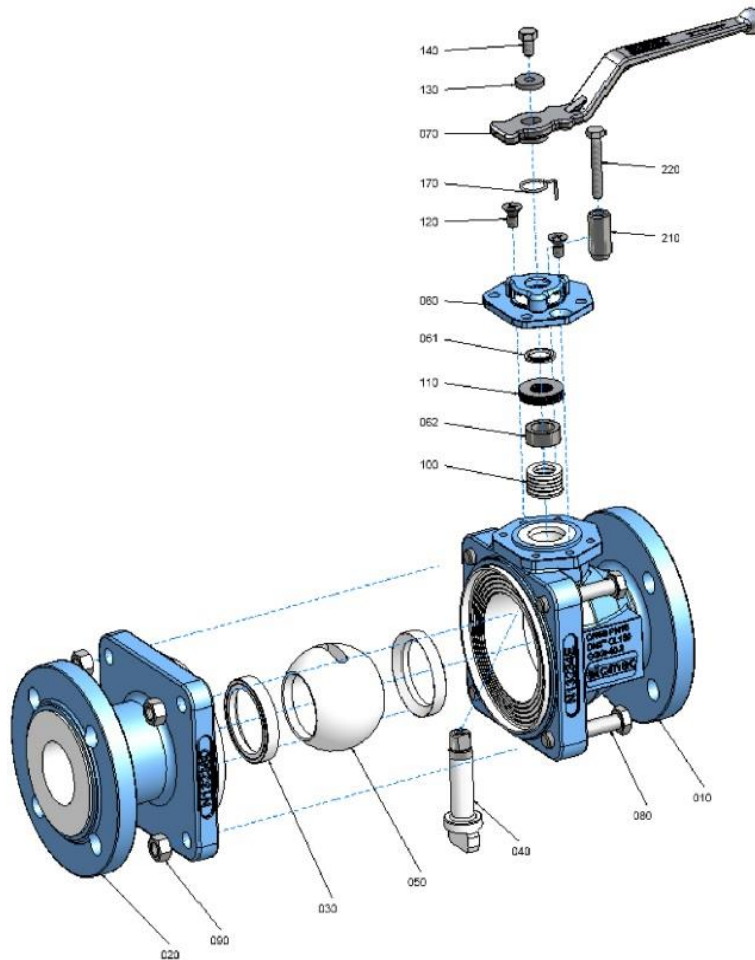


Dimensions DIN



Ø DN (mm)	L	H	R	t	Ød	Weight (kg)
15	130	121	160	59,5	15	4,0
20	150	121	160	69,5	20	4,8
25	160	124	160	65,5	24	5,4
32	180	150	210	81	32	10,2
40	200	150	210	80	38	10,7
50	230	165,5	210	87,5	48	14,1
65	290	205	313	108	65	24,0
80	310	212	313	118	80	31,0
100	350	227	313	140	100	47,5

Material



Number	Part Name	Material	Number	Part Name	Material
010	Body	EN-JS1049	080	Screw	Stainless Steel (1.4301)
020	End cap	EN-JS1049	090	Hexagon Nut	Stainless Steel (1.4301)
030	Seat Ring	PTFE	100	Packing	PTFE / PTFE-Graphit
040	Operating Pin	Stainless Steel (1.4470) / PFA	110	Belleville Washer	Stainless Steel (1.4310)
050	Ball DN 15-25, 40, 50	Steel (1.2343) / PFA	120	Countersunk Screw	Stainless Steel (1.4301)
	Ball DN 32, 65-100	EN-JS1049 / PFA	130	Washer	Stainless Steel (1.4301)
060	Cover	Stainless Steel (1.4308)	140	Hexagon Nut	Stainless Steel (1.4301)
061	Bushing	PTFE	170	Grounding	Stainless Steel (1.4310)
062	Distance Ring	Stainless Steel (1.4104)	210	Stop	Steel (1.0037) galvanized
070	Hand Lever DN 15-50	Pressure casting (galvanized)	220	Hexagon Nut	Stainless Steel (1.4301)
	Handhebel DN 65-100	Ductile Cast Iron (galvanized)			