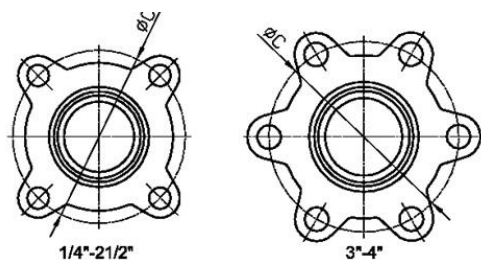


**3-piece Ball Valve with Female Threads  
KH-WA-3IG  
Stainless Steel**

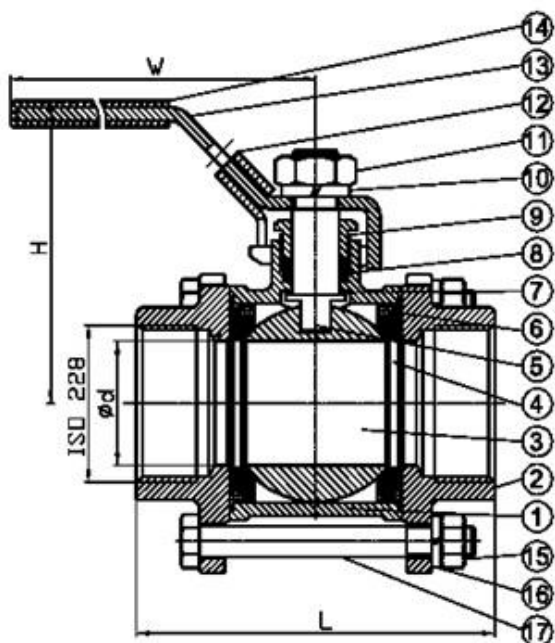
**Nominal Pressure: PN63**  
**Face to face acc. to DIN 3202-M3**  
**Female Threads on both sides acc. to ISO 228-1**  
**Body: Stainless Steel (1.4408)**  
**Ball: Stainless Steel (1.4408)**  
**Ball Seats: PTFE**  
**Full Bore**  
**Blow-out Proof Stem in Stainless Steel**  
**Anti-Static-Design**  
**incl. lockable handlever**

Nominal Diameter	Nominal Pressure	Article number
DN8	PN63	KH-WA-3IG-1/4"
DN10	PN63	KH-WA-3IG-3/8"
DN15	PN63	KH-WA-3IG-1/2"
DN20	PN63	KH-WA-3IG-3/4"
DN25	PN63	KH-WA-3IG-1"
DN32	PN63	KH-WA-3IG-1 1/4"
DN40	PN63	KH-WA-3IG-1 1/2"
DN50	PN63	KH-WA-3IG-2"
DN65	PN63	KH-WA-3IG-2 1/2"
DN80	PN63	KH-WA-3IG-3"



1/4"-21/2"

3"-4"



Material of Construction		
No.	Part Name	Material
1	Body	CF8M
2	End Caps	CF8M
3	Ball	CF8M
4	Ball Seat	15%R+PTFE
5	Stem	316
6	Body Gasket	PTFE
7	Stem Gasket	15%R+PTFE
8	Packing	PTFE
9	Bushing	316
10	Belleville Washer	304
11	Stem Nut	304
12	Locking Device	304
13	Handle	304
14	Handle Sleeve	Plastic
15	Bolt Nut	304
16	Spring washers bolts	304
17	Body bolts	304

Dimentions in mm						
Nominal Diameter	$\phi d$	L (DIN3202 S13)	L (DIN3202 M3)	H	W	C
DN8	11,6	70	50	56	102	40,5
DN10	12,7	70	60	56	102	40,5
DN15	15	75	75	65	123	47
DN20	20	90	80	67	123	53,5
DN25	25	100	90	79	153	59,6
DN32	32	110	110	84	153	74,2
DN40	38	125	120	92	183	84
DN50	50	150	140	99	183	101
DN65	65	190	185	136	246	132
DN80	76	220	205	146	246	161,5
DN100	100	270	240	168	503	191