

Universal Valve Solutions



WAGNER[®]
Armaturen

... keeping flow controlled.



The Onboarding is underway!

Start your mission toward an efficient and sustainable future for your company – with Wagner Armaturen.

Your reliable partner for industrial valves and automation

With Wagner Armaturen, you benefit from efficient solution concepts – precisely tailored to your industrial situation in petrochemicals and refineries, chemicals, pharmaceuticals, metallurgy, paper processing, and other industrial sectors. We advise you, plan your solutions, and provide all the valves you need.

**Optimize the performance of your plant.
Working as a team with specialists for every challenge.**



Petrochemicals and Refineries



Chemical Industry



Pharmaceutical Industry



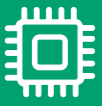
Power Plants and Energy Generation



Steel and Metal Industry



Paper and Pulp Industry



Semiconductor Industry



Water and Wastewater Management



Shipbuilding and Offshore



Food and Beverage Industry



HVAC and Building Services Engineering



Mining and Resource Extraction



Automotive and Mechanical Engineering



Aerospace Engineering

Universally Positioned

With Clear Focus on Emissions, Sustainability, and Customized Solutions

More Than Just Production



FHT Valves offers customized ball valve solutions, including special alloy versions, heating jackets, sampling and bottom-drain options, and much more.

14



Miyawaki conducts steam audits that reduce losses, lower CO₂ emissions, and save operating costs. This is complemented by the patented SCCV[®] valve system, which prevents steam losses, protects valves, and enhances plant safety.

16-17



Termovent manufactures gate valves, globe valves, check valves, as well as X-Mas Tree valves and plug valves. In its in-house foundry, pressure-bearing bodies are produced according to AD2000 standards and in compliance with API regulations.

15

READY FOR TAKEOFF

The Standards

Unlimited Possibilities

- Ball and plug valves
- Check valves
- Butterfly and damper valves / shut-off and control
- Gate valves
- Globe valves
- Actuators
- Steam traps / condensate lifts
- Strainers
- Special valves
- Custom valves by SchuF

20-23

Details

TA-Luft compliance

Certified according to DIN ISO 15848-1

18

Special solutions

Also available in special materials

19

Contact

Direct line to Mission Control

25

High-End for Germany



We are your channel partner for the Masoneilan series of premium products from Baker Hughes in northern and western Germany.

08

Masoneilan

Baker Hughes

Channel Partner

Specialists in Their Field



Bellow sealed valves for ammonia, chlorine, and other specialized applications

High-pressure valves

14-15



Flow-optimized strainers to enhance plant efficiency

13



pressure reducing, regulating and overflow self operated

13



Knife gate valves in all designs

Check and shut-off valves for water applications

12



Automation based on the Scotch-Yoke technology

Rotary vane actuators Ultra-precise and compact in design

10-11



PTFE-lined butterfly valves For toxic, abrasive, or corrosive materials

07



Self-lubricating ball valves Floating or trunnion-mounted with metal-to-metal sealing

09



Special safety valves For gases and cryogenic applications

12

Diffusion and Corrosion – Light Years Ahead

Ball valves and shut-off valves with astronomically good protection

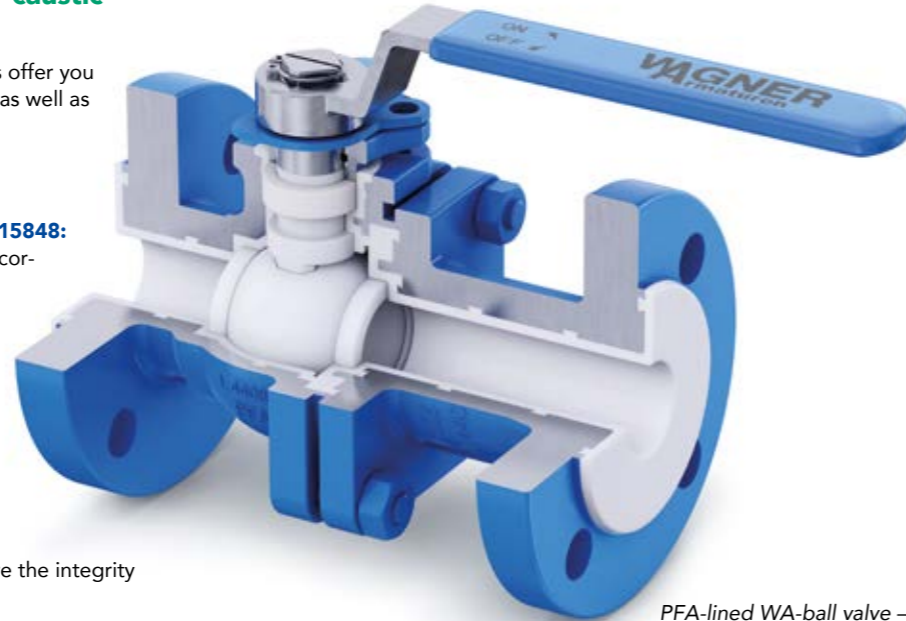
PFA-lined WA-ball valves – reliable for caustic solutions, acid, alkalis and other.

Reliable and cost-effective - PFA-lined WA-ball valves offer you options for use in pharmaceutical or chemical plants, as well as in the food industry.

Your benefits:

- **Emission-free certified according to DIN EN ISO 15848:** through V-shaped PTFE or TFM1600 stem seal, in accordance with the new TA-Luft
- **Special seat design:** for low operating torque and reliable sealing performance
- **Vacuum-tight:** liner securely locked into the body by “swallow-tail” shape slots and locking grooves to resist shrinkage and allow vacuum application
- **High quality lining:** electrostatic spark test is 100 % conducted to ensure the integrity of the liner

Explore new worlds of perfect resistance.



PFA-lined WA-ball valve – highly resistant

PTFE-lined butterfly valves for challenging media

Toxic, abrasive, or corrosive media – GAR-SEAL® butterfly valves offer unique options in throttling, control, or shut-off: made in Germany. Durability through isostatic molding as well as easy maintenance increase operational safety and provide optimal application perspectives – even during long operating times.

Your benefits:

- **Emission-free certified according to DIN EN ISO 15848:** Compliant with current TA-Luft regulations
- **Float-mounted disc on the shaft:** for easy maintenance, better tightness, and less abrasion through optimal balancing
- **Homogeneous structure with optimal resistance:** high material density isostatic molded from virgin PTFE
- **Long service life and reliability:** with minimized tendency to crack or porosity

Fulfill your mission: Maximum operational reliability under difficult operating conditions.



PTFE shut-off valves - particularly long life

WAGNER
Armaturen

Garlock

**H₂ READY
INTO THE FUTURE**

In the Orbit of Extremes

Ball Valves and Butterfly Valves with Perfect Tightness – and Extraordinary Durability

MASONEILAN - PARTNER

Masoneilan Control Valves – Precision Under Extreme Conditions

Cage-guided or multi-stage, the Masoneilan series of control valves from Baker Hughes delivers controlled performance even under the highest pressures, extreme temperatures, and aggressive media. Designed for applications where standard solutions reach their limits – in refineries, power plants, and petrochemical facilities.

The specially engineered multi-stage trims, wear-resistant materials, and flow-optimized cage systems enable precise pressure reduction while minimizing cavitation, erosion, and noise. For processes that demand absolute stability.

Your Benefits:

■ Maximum Process Stability:

Multi-stage pressure-reduction systems significantly reduce cavitation and vibrations; even at high differential pressures, the control characteristics remain consistent and manageable.

■ Durability in Severe-Service Conditions:

Hardened and coated trim components resist erosion and corrosion even with abrasive or critical media; extended service life lowers downtime costs.

■ Digital Integration:

Compatible with intelligent positioners and diagnostic systems for condition monitoring and planned maintenance.

Achieve new levels of process control – with Masoneilan control valves for the most demanding applications.



Camflex™

The main feature of the Camflex™ valve is an eccentric rotary plug with double offset. During opening, the cam motion moves it away from the seat, eliminating friction and allowing precise control across the entire opening range.

When closing, the rear edge first contacts the seat ring. With further rotation, the cone arms flex slightly, ensuring the cone fully contacts the seat. This provides a consistently tight and uniform seal over time.



Self-lubricating ball valves – metallic tightness

Floating or trunnion-mounted ball valves – Penta's metallic sealing ball valves shine with extraterrestrial reliability. They are perfectly suited for higher pressure and temperature requirements that go beyond the limits of soft-sealing ball valves.

The unique patented Pentafite metal seats are produced in a manufacturing process similar to sintering, where metal powder and graphite are pressed at high pressure and temperature. For valves under extreme conditions.

Your Benefits:

■ Perfect sealing, even with gases:

Absolutely bubble-tight according to DIN EN 12266 Class A – thanks to the automatic adaptation of the seats to the ball shape due to the elasto-plastic properties of the Pentafite material

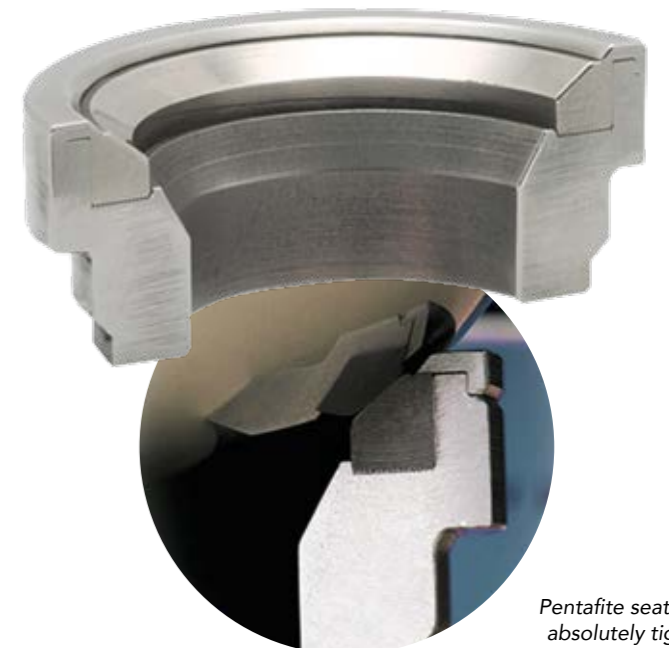
■ Low torque:

The lubricating properties reduce friction between the seat and the ball even at high temperatures or high operating pressures; 40 % less torque is required to comparable ball valves

■ Easy maintenance:

Simplified maintenance and assembly, as the seat and ball do not need to be lapped thanks to Pentafite-Technology.

Discover new horizons – with Penta ball valves for extreme applications.

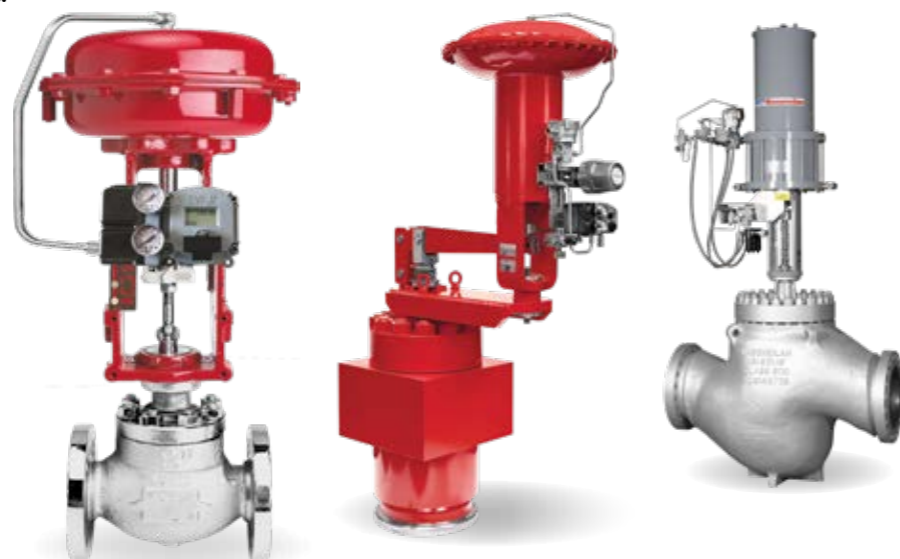


Pentafite seats – absolutely tight

Masoneilan

Baker Hughes 

Channel Partner



Actuators from the World Market Leader

Automation technology for industrial altitudes
– the ROTORK RC200 series & vane actuators

Automation based on the Scotch-Yoke technology:

Pneumatically operated valves that save 30–40 % of the purified compressed air generate advantages and increase the efficiency of your butterfly- and ball valves. Especially the Scotch-Yoke actuators from ROTORK. As the exclusive sales and service partner of ROTORK, Wagner Armaturen maintains the largest stock of actuators and spare parts in Germany for you.

Scotch-Yoke actuators achieve a 50 % higher torque at the end positions compared to conventional rack-and-pinion actuators. Choosing a smaller actuator saves air, costs and procurement.

How it works: the Scotch-Yoke technology

The pneumatic force is converted into a rotary motion via one or two drive pistons. The piston roller attached to the piston moves in a yoke, which rotates the drive and valve shaft.

From high temperature to Arctic low temperature: ROTORK is "all-present"

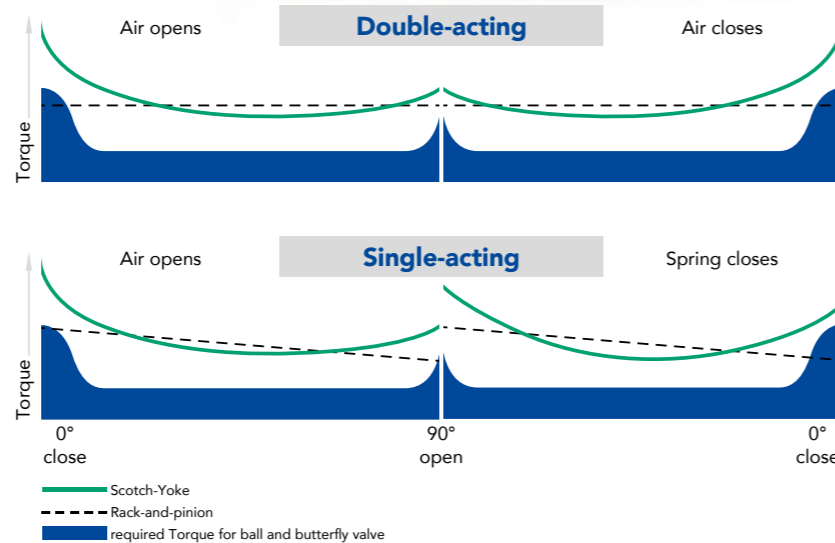
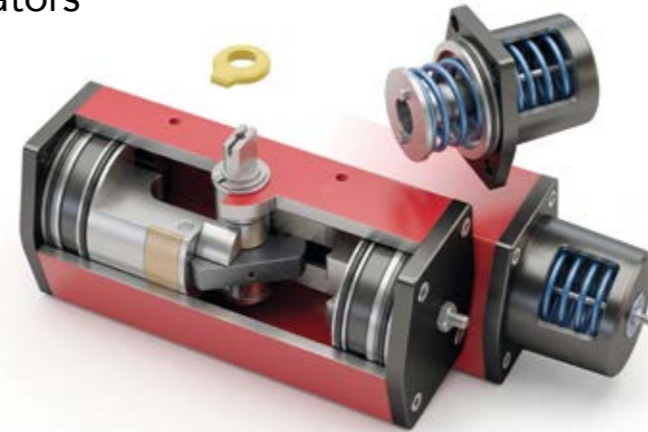
In the standard version, ROTORK actuators can be used in a temperature range of $-20\text{ }^{\circ}\text{C}$ to $+80\text{ }^{\circ}\text{C}$. Additional variants allow for operation in high-temperature environments up to $+150\text{ }^{\circ}\text{C}$, as well as in low-temperature environments down to $-47\text{ }^{\circ}\text{C}$. Optional features include manual override, extended travel adjustment, as well as special materials or coatings.

Additional advantages:

- **Certified actuators:**
Approved for use in SIL2 systems as single channel configuration and in SIL3 systems in redundant configuration according to IEC 61508. Additionally, ATEX certified for use in gas and dust Ex-zones.
- **Standardized interfaces:**
According to ISO 5211 and DIN 3337, in combination with a double square drive according to DIN 79 for mounting on the valve.
- **Side NAMUR flange:**
For direct assembly of solenoid valves.
- **Interface according to VDI/VDE 3845/NAMUR:**
For use with positioners and feedback units.

Gain an advantage, even in extreme environments in the harshest conditions.

rotork[®]



Scotch-Yoke actuators – providing torque where it's needed.



K-Tork actuators for efficient control

Rotary Vane Actuators – for the Highest Requirements

Ultra-precise, compact in design, and with high positioning accuracy, the automated valve solutions of the K-Tork product family provides optimal control for rotary valve actuators in extreme cycles. The pneumatic vane actuators, known as "True Rotary" actuators, do not require the conversion of linear to rotary motion and are specified for the most demanding applications. They operate in temperature ranges from $-40\text{ }^{\circ}\text{C}$ to $+80\text{ }^{\circ}\text{C}$ or from $-20\text{ }^{\circ}\text{C}$ to $+150\text{ }^{\circ}\text{C}$.

Your advantages:

- **High positioning accuracy:**
For precise control of valves, ball valves, or dampers.
- **Consistent torque output:**
Up to 18,300 Nm.
- **Extremely long life service:**
High switching frequencies due to low-friction, result of the dual-opposed lip and seal design.
- **Compact design:**
With an optimal torque-to-size ratio.
- **Modular design:**
a spring can be added to double-acting actuators to make them spring-return actuators.

All other Rotork actuator series are, of course, also available from us.



Mission: Smooth Operation

Four Specialists Ensuring Uninterrupted Plant Operations

Delivered Ice-Cold – For Cryogenic Applications

Goetze KG Armaturen, founded in 1949 and based in Ludwigsburg, Baden-Württemberg, is a German manufacturer of industrial valves and safety valves. Over more than 75 years, the company has evolved into an internationally operating provider of high-performance valves.

Highlights

- Coverage of a wide range of pressures and temperatures: **up to 1500 bar and from -270 °C to +400 °C**
- **Special designs** for building and drinking water installations, as well as hygienic applications

Industries

Goetze primarily serves water and wastewater management, the chemical and petrochemical industries, energy and plant engineering. Their valves are also used in the food and pharmaceutical industries for hygienic processes.



Full Thrust – self operated regulators

Schley, based in Ahrensburg, Germany, is manufacturing industrial valves since 1913. A traditional German manufactory with over 100 years of experience in developing and producing reliable “Made in Germany” valves.

With a digital product archive, the ability to reproduce historical valves 1:1, direct after-sales service, and an experienced team, Schley provides tailored solutions with short response and delivery times.

Highlights

- **Self-acting pressure-reducing and bypass valves without external power supply**
- Available in **ductile iron, cast steel, stainless steel, bronze** and other materials

Industries

As a Northern German specialist, traditionally strong in shipbuilding/marine, as well as plant engineering and mining.



Expanding Horizons in Gate Valve Solutions

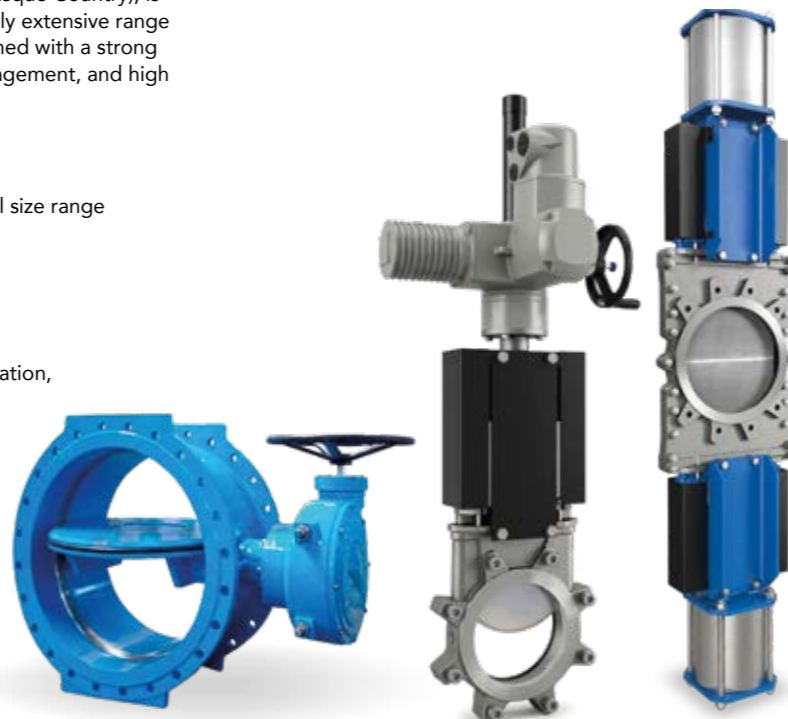
CMO Valves, founded in 1993 and based in Tolosa/Altzo, Spain (Basque Country), is a manufacturer of industrial valves. The company offers an extremely extensive range of gate and knife gate valves for liquids, slurries, and solids, combined with a strong export network (over 70 countries), ISO 9001-certified quality management, and high adaptability to customer-specific requirements.

Highlights

- **Gate valves in a wide variety of designs** across a broad nominal size range
- **Valves and dampers**
- **Check and shut-off valves** for water applications

Industries

Used in sectors such as water supply and wastewater, power generation, mining, pulp and paper, chemical and petrochemical industries, food & beverage, and plant engineering worldwide.



Clean Media for Zero-Gravity Efficiency Gains

W-FILTER GmbH, founded in 1980 and based in Speyer, Rhineland-Palatinate, Germany, is a German manufacturer of industrial filtration solutions. The company offers a broad range of filtration valves for liquid media, including strainers, basket and cartridge filters, startup screens, and switch/dual filters in nominal sizes from DN 50 to DN 1000 and pressure ratings up to PN 100.

Highlights

- Longer service life thanks to **intelligent screen design**
- **Lower energy costs** due to reduced pressure drop:
 - 75 % compared to comparable Y-strainers
 - 50 % compared to conventional cartridge filters
- At least **double the operating time** before cleaning

Industries

Primarily used in energy and environmental technology (e.g., power and biomass plants), chemical and petrochemical industries, plant and power engineering including district heating, as well as water and wastewater management.



Powerful Constellation

The Dream Team: Bellow sealed Valves from PHOENIX and High-Pressure Valves from STRACK

Mastering Critical Media for 100 Years

The Phoenix Valve Group is a European corporate group with over 100 years of experience in developing and manufacturing industrial valves. Headquarters and production are in Volkmarshen, Germany, with international locations.

Highlights

- Bellow sealed valves approved for chlorine and ammonia applications, as well as solutions for highly critical and safety-relevant media
- Shut-off, control, and check valves
- Special valves

Industries

Strong presence in chemical and petrochemical industries, power generation, refineries, and many other process-intensive sectors.



A Century Under Extreme Pressure

As a German manufacturer of industrial valves founded in 1922 and part of the Phoenix Valve Group, STRACK Armaturenwerke draws on unparalleled expertise in extreme conditions. Based in Volkmarshen, the company specializes in robust valves for demanding applications.

Highlights

- Specialized high-pressure valves for the highest pressure and temperature requirements
- Gate valves, globe valves and check valves in forged and cast designs for high-pressure and high-temperature applications

Industries

Particular expertise in the chemical and petrochemical industries, power plants, energy facilities, and refineries.



FHT Valves is a European manufacturer of high-performance ball valves, based in Mungia, Basque Country, Spain. Founded in 1997, the company specializes in industrial shut-off solutions for demanding applications in compliance with international standards.

Customized Engineering Solutions

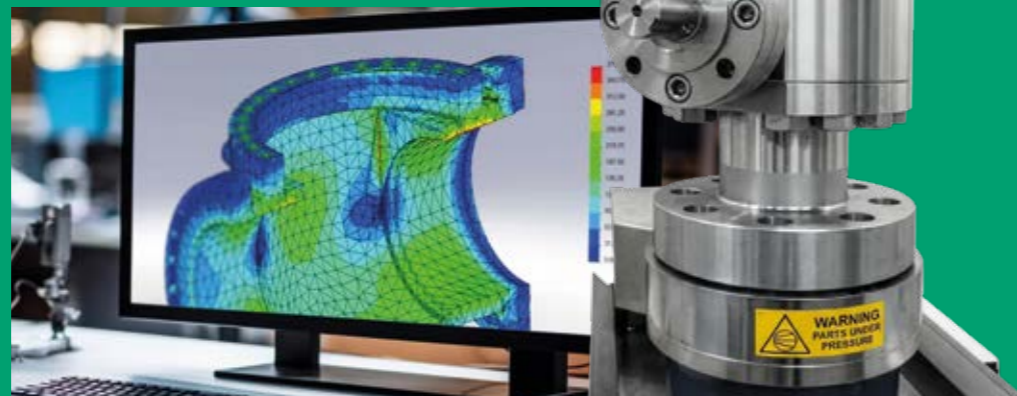
The in-house engineering team responds quickly and flexibly with customer-specific solutions. Always ensuring compliance with all certifications and long service life, all developments undergo the necessary internal testing processes.

Highlights

- Tailor-made special designs
- Two- and three-way ball valves
- Versions with special alloys, heating jackets, sampling, and bottom-outlet options

Industries

Projects in chemical, petrochemical, oil and gas industries, shipbuilding, as well as water and environmental technology.



Termovent is a European manufacturer of industrial valves with over 60 years of experience, privately owned. Valve production takes place in Temerin, with an in-house foundry for steel components in Serbia. TERMOVENT SC operates in over 60 countries worldwide and is recognized as a reliable partner for the process and energy industries.

In-House Foundry for Maximum Flexibility

Termovent stands out with independent production of all valve components, including cast steel, modern test rigs for pressure testing (often well above 600 bar), and valid certifications according to international standards, including TÜV, PED, and API.

8,500 m² production area

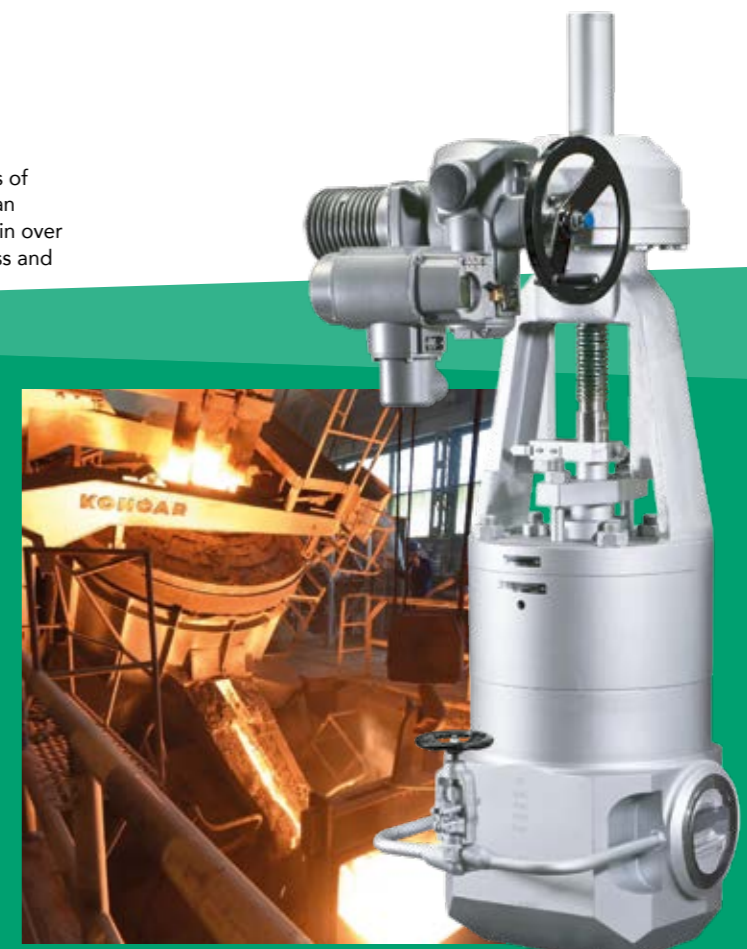
3,000 tons annual capacity

Wide Range of Materials

- Low-carbon
- High-alloy
- Wear-resistant
- Stainless steel-based

Industries

Supplying power plants, pipelines, refineries, energy facilities, and other process-intensive industries worldwide.





Steam audits: according to DIN ISO 16247-1 or DIN ISO 50001

Even the loss of 100 kg of steam/hour costs approximately 30,000 euros per year at a price of 35 €/t of steam – and generates a CO₂ emission of 17 kg/year, which could be avoided. Without periodical inspections, steam systems have an average failure rate of 20 % of all installed traps. A periodical steam audit reduces your GHG Scope 1 emissions and optimizes the rate to usually below 5 %.

Recognize potentials, implement optimizations: with MIYAWAKI steam audits

The MIYAWAKI audit provides you with an analysis of your pure steam system as well as a report on the potentials for reducing your steam consumption – both in the steam system itself and in conjunction with thermal systems. As a result, you will receive a list of your potentials with suggestions and initial cost-benefit analyses.

Your benefits:

- Reduction of operating costs
- Increase your operational safety
- Improvement of your CO₂ balance
- Increase the operating time of your plant

Move towards achieving saving potentials – through the impressive opportunities of modern steam management.



Dr. Trap PM500 for preventive Maintenance

Use Potentials, Save Resources

High-tech for entrepreneurial orbit: effective steam management

The Miyawaki steam management system

1. System inspection

- Initial analysis and discussion of the audit's focal points

2. System audit

Examination of the essential components

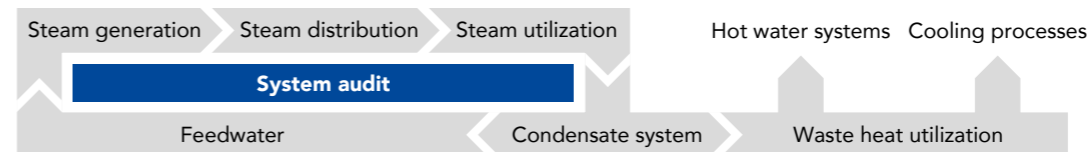
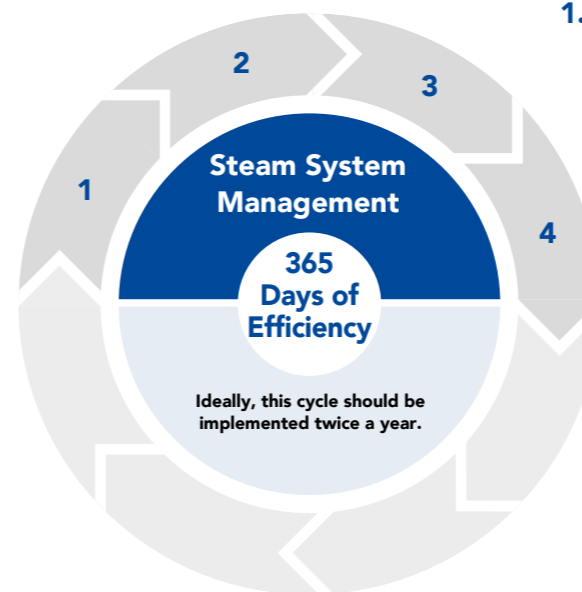
- Condensate traps
- Bypass devices
- Other valves

3. Optimization

- Evaluation of design data and current process parameters
- Identification of necessary changes
- Evaluation of measurement results and proposals for replacement

4. Implementation – as needed

- Consulting in technic and conception
- Procurement of components
- Project management



SCCV®-system – longer-lasting tight than others

Proven for Decades: the SCCV®-system

Efficiency and energy saving in steam management – on the subject of temperature control valves used for draining of trace heating or main steam services, MIYAWAKI's engineering brings a profitable advantage with the internationally patented Self Closing and Centering Valve system – the SCCV®-system.

Intensive research and development activities over many years have enabled MIYAWAKI to incorporate the SCCV®-system in various types of steam traps. Thus it became possible to adopt the SCCV®-system to a wide pressure range and to utilize the SCCV®-system not only for bi-metal steam traps, but also for inverted bucket and float type steam traps.

Your benefits:

- **Better sealing:**
Through optimal centering of the closing device
- **Significantly higher lifespan:**
greatly reduced wear of all internal parts due to the reduction of the closing forces required to maintain a seal. No partial or one-sided precipitate wear of valve and seat
- **100 % protection against steam losses and pressure surges:**
the thoughtful use of bi-metal temperature control elements reduce steam losses and maintenance with the internationally patented SCCV®-system.

Reduce steam losses and maintenance with the internationally patented SCCV®-system.



Excellence in Atmosphere: TA-Luft Compliance

Galactic solutions – certified according to DIN ISO 15848-1

As an industrial company, it is important for you, to reliably meet the high requirements of the TA-Luft regulations. Wagner Armaturen supports you in this and offers you emission-free valves that meet the air quality requirements 100 % of the time. Including robustness, durability, and precise control of air quality levels.

Your benefits:

■ Certified according to ISO 15848-1:

Many of our valves meet the requirements of the new TA-Luft directive

■ High leakage classes:

Our GAR-SEAL® shut-off valves meet better leakage classes than the new TA-Luft minimum standard

■ Maximum reliable solutions:

Through manufacturer certifications and possible post-certification

Rely on 100 % certified quality for your entrepreneurial expansion.

Key innovations of the TA-Luft 2021, an overview

■ Stricter limit values:

Numerous limit values have been newly and more strictly defined.

■ More frequent measurements:

Some measurements are now done annually instead of every three years.

■ Inclusion of new substances and new categorization:

Whether furans, dioxins, benzopyrene – some substances have been newly included, while others, such as formaldehyde, have been reclassified in terms of hazardousness.

■ Expanded scope of application-range:

Even previously unaffected facilities – such as biogas plants or shredder plants – are now subject to TA-Luft requirements.

■ Increased relevance of odors:

Due to the new regulatory assessment of significant odor emissions.



Connected – with tailored solutions

Wagner Armaturen:
Your service partner for individual challenges

With Wagner Armaturen, you benefit from efficient solution concepts tailored to your industrial situation in petrochemical and refinery, chemical, pharmaceutical, metallurgical, paper processing, and other industrial companies.

We consult, plan, and provide you with all the necessary valves.

Customized valves – including special materials

You require special valves, such as for tank outlets, sampling, or handling solids, or for extreme temperatures and chemicals? Wagner is your solution partner, even if your requirements call for special materials such as Hastelloy, Inconel, Duplex, or Titanium.

Optimize the performance of your plant in collaboration with a team of specialists for all your challenges.

Unlimited possibilities

Therefore, here is only a "small" selection from our product portfolio.

Ball and butterfly valves

Variations:

- 2-way ball valve
- Multi-port
- Sampling
- Bottom outlet
- Double-Block & Bleed (DB&B)
- Rising-Stem Ball Valve (RSBV)
- Ball Segment, Ball Sector
- Cavity-filled (reduced dead space)
- Top-Entry
- Lift & Plug
- Fully welded
- Open-close
- Control

Seals:

- Soft and metal to metal

Connections:

- Male and female threaded
- Socket weld and butt weld ends
- Flanges

Standards:

- DIN-EN
- ASME
- API



Check valves

Variations:

- Open – close
- Control

Seat-closure Systems:

- Piston
- Cone
- Throttling plug
- Perforated (multi-hole) plug
- Multi-stage
- Rotary plug
- Special contoured
- Diaphragm

Seals:

- Soft and metal to metal

Standards:

- DIN-EN
- ASME
- API



Shut-off and control valves

Versions:

- Wafer type
- Lug type (with threaded holes)
- Double-flanged
- Top-Entry
- Gate Valve Replacement
- Welded version
- Louver, multi louver valves
- Damper valves, Double-blade valves
- Fire-safe design
- On-Off
- Control

Seat systems:

- Concentric
- Double-offset, triple-offset, and quadruple-offset

Seals:

- Soft and metal to metal

Connections:

- Flanges
- Welded ends

Standards:

- DIN-EN
- ASME
- API



Gate valves

Types:

- Gate valves
- High-pressure valves
- Knife gate valves
- Slurry valves
- Penstocks
- Multi-blade valves
- Double-Block&Bleed valves
- On-off (shut-off)
- Control

Seat-closure Systems:

- Wedge
- Disc
- Double-plate
- Rubber-coated
- Vulcanized

Seals:

- Soft and metal to metal

Connections:

- Flanges
- Welded ends
- Threaded ends

Standards:

- DIN-EN
- ASME
- API



Globe valves

Variations:

- Open – close
- Control

Seat-closure Systems:

- Piston
- Cone
- Throttling plug
- Perforated (multihole) plug
- Multi-stage
- Rotary plug
- Special contoured
- Diaphragm

Seals:

- Soft and metal to metal
- Bellows

Standards:

- DIN-EN
- ASME
- API



Actuators

Pneumatic:

- Rack and pinion
- Scotch-Yoke
- Rotary-vane
- Diaphragm actuators
- Piston rod actuators

Electric:

- 2-phase, 3-phase
- On-off
- control
- 3-position

Hydraulic/Electro-hydraulic:

- Linear, rotary and part turn actuators

Fail-Safe:

- Spring return
- Battery backup
- Reserve air tank
- Redundancy

Accessories:

- Solenoid valve
- Position feedback unit
- Initiators
- Positioner

Interfaces:

- 4–20 mA (HART)
- Bus systems (Profibus, Profinet, Modbus, ASi, IO-Link, Foundation, Devicenet, etc.)
- Bluetooth

Approvals:

- SIL (IEC 61508)
- ATEX
- FireSafe



Strainers

Versions:

- Y-type
- Pot Strainer
- Double filters
- Flow-optimized basket filters (W-filter)
- Startup filter (conical sieves)

Screens:

- Coarse and fine screens
- Customized screens

Options:

- Cover-Lifting Device

Connections:

- Flanges
- Welded ends
- Threaded ends

Standards:

- DIN-EN
- ASME
- API



MultiProbe™ valve Model 25X

- Infrared or ultrasonic real-time reaction monitoring (process analytical technology)
- IR and temperature sensors integrated into the cone and stem
- Equipped with a unique and patented sealing system



SchuFI
innovative valves, precision engineering

**AUTOMATION
MADE EASY**



Steam traps/Condensate recovery devices

Versions:

- Temperature control trap (Bi-metallic)
- Balanced pressure thermostatic trap
- Thermodynamic disc trap
- Ball float trap
- Inverted bucket trap
- Free float trap

Options:

- Outlet ball valve
- Outlet globe valve
- Separator
- Turn-key systems

Connections:

- Flanges
- Welded ends
- Threaded ends

Standards:

- DIN-EN
- ASME
- API



Automation solutions for all requirements.

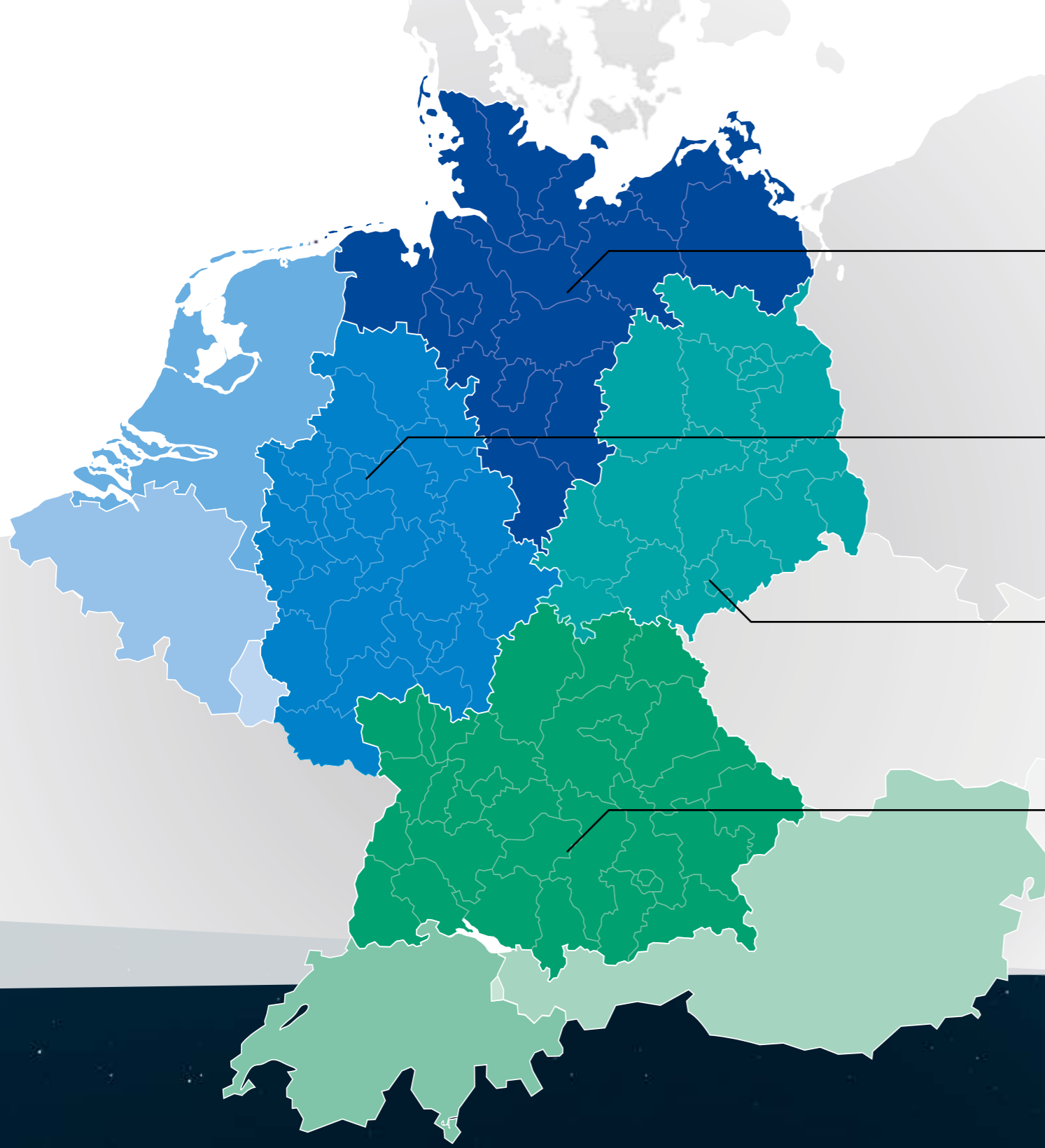
Special valves

Safety relief valves, Pressure reducing valves, Overflow valves, Sampling systems, Diverters, Steam-water mixing systems, Bottom outlet valves, Changeover valves, Line blind systems, Steam injectors, Steam coolers, Steam dryers, In-Tank Emergency Shut-Off (TESO), bursting discs, and more.

Options for all valves

- **Possible materials:** Brass, cast iron, ductile iron, cast steel, stainless steel, duplex, super duplex, Hastelloy, Inconel, titanium, cast or forged, hardened, coated, ceramic, plastic, PTFE/PFA-lined.
- **Possible approvals:** TA-Luft (ISO 15848), FireSafe, SIL (IEC 61508), ATEX, FDA, BAM, DVGW (gas, water), Vessel Type Approval.
- **Possible testing methods:** Dye penetration testing, magnetic particle testing, PDI, ultrasonic testing, X-ray.
- **Options:** heating jacket, hand lever extensions, stem extensions, locking devices, spring return handles, gear-boxes, actuators (electric, pneumatic, hydraulic), chain wheels, flexible stem extensions, fireproof insulation (Pyrojacket).

Mission Control – Ready



Germany North

Postal Code Area 17-31, 37-38

Steffen Weinert

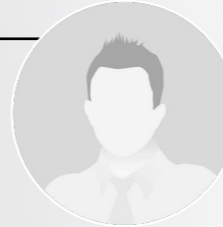
sweinert@wagner-armaturen.de
Phone: +49 (0) 4154 838 45 40
Mobile: +49 (0) 173 810 43 08



Other Foreign Countries

Marko Wagner, Dipl.-Ing. (FH)

mwagner@wagner-armaturen.de
Phone: +49 (0) 4154 838 45 32
Mobile: +49 (0) 173 205 92 64



Germany West

Postal Code Area 32-36, 40-66, BeNeLux

Position currently being filled

info@wagner-armaturen.de

Phone: +49 (0) 4154 838 45 45
Mobile: +49 (0) 176 878 039 21



Key-Account-Manager

Baker Hughes Masoneilan Specialist

Andreas Lauffs

alauffs@wagner-armaturen.de
Phone: +49 (0) 4154 8384548
Mobile: +49 (0) 1577 6296999



Germany East

Postal Code Area 0-16, 39, 98-99

Daniel Prautzsch

dprautzsch@wagner-armaturen.de
Phone: +49 (0) 4154 838 45 34
Mobile: +49 (0) 163 759 13 21



Germany South

Postal Code Area 67-97, Austria, Switzerland

Hans-Uwe Schulder

huschulder@wagner-armaturen.de
Phone: +49 (0) 4154 838 45 41
Mobile: +49 (0) 178 276 77 31



Global Partners for unlimited possibilities



Always personal, whether by phone or email

Headquarter +49 (0) 4154 83845-0

Sales +49 (0) 4154 83845-10

Fax +49 (0) 4154 99328-63

Email info@wagner-armaturen.de

Office hours:

Mon – Thu: 8:00 am to 5:00 pm

Fri: 8:00 am to 2:30 pm

In case of emergencies outside our office hours

Emergency hotline +49 (0) 4154 83845-5



Planning

- Consulting
- Customized Solutions
- Individual Documentation
- Engineering
- Technical Drawing
- Valve and Actuator Sizing

Service

- Tagging of valves with plastic or stainless steel labels
- Silicone-, oil-, and grease-free valves through ultrasonic cleaning
- 24/7 hotline at +49 (0)4154 83845-5
- Condensate trap testing/steam audits
- Spare part management

Protection

- Operational within 24 hours in the event of a building fire or virus attack
- Proactive Operational Safety
- Data Security

Logistics

- Double incoming goods- and dispatch control
- Customized warehousing and consignment
- High-quality packaging and secure shipping
- Express & courier
- Punctuality

Quality Assurance

- According to ISO 9001:2015
- Internal Audits
- Testing/Calibration of positioners and feedback units with suitable testing equipment
- Regular Supplier Audits
- In-house valve testing bench for hydrostatic testing and leak detection

Space-Grade Reliability

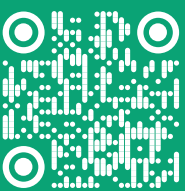
Service with Foresight

Your Company - Complex Systems. It's good to have a partner you can rely on, even on your extreme industrial applications. Since 1998, Wagner Armaturen has stood for reliable consulting and quality.

Our mission: a clear focus on emissions, sustainability, and solutions.

Our target: the right valve at the right time in the right place – for your systems.

READY FOR
TAKEOFF



Visit us in cyberspace!
wagner-armaturen.de

WAGNER[®]
Armaturen

... keeping flow controlled.